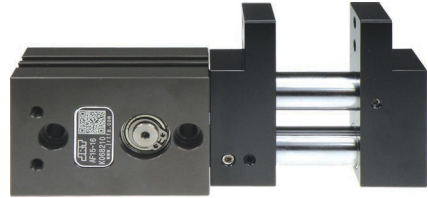




특징 (Character)

- RACK & PINION을 이용한 동기 구동방식
Rack & pinion type
- JAW가 BODY기준 편측에 위치
Jaw is located on one side of gripper body
- 회전 ARM 선단부착에 적합
Suitable for attaching to rotation ARM rod thread
- 개폐검출 센서 전기종 부착가능
Magnetic sensor is available for open-close sensing



AF101

AF02

AF04P

AF105P

AF10

AF13

AF14

AF15

AF316

AF316L

AF416

AF17

AF117

AF24

AF26

AF28D

AF28DS

AF30 (SN)

AF30L

AF46 (SN)

AF56L

RAF56N

MF16

랙 & 피니언 방식 (Rack & pinion type)

센서위치 (Positioning of sensor)

마그네틱 센서 부착가능
for magnetic sensor

작동 방식 (Kinetics)

랙 & 피니언 방식
pinion and toothed rack
system, centric gripping

구동부 (Drive)

복동식
double acting
pneumatic cylinder

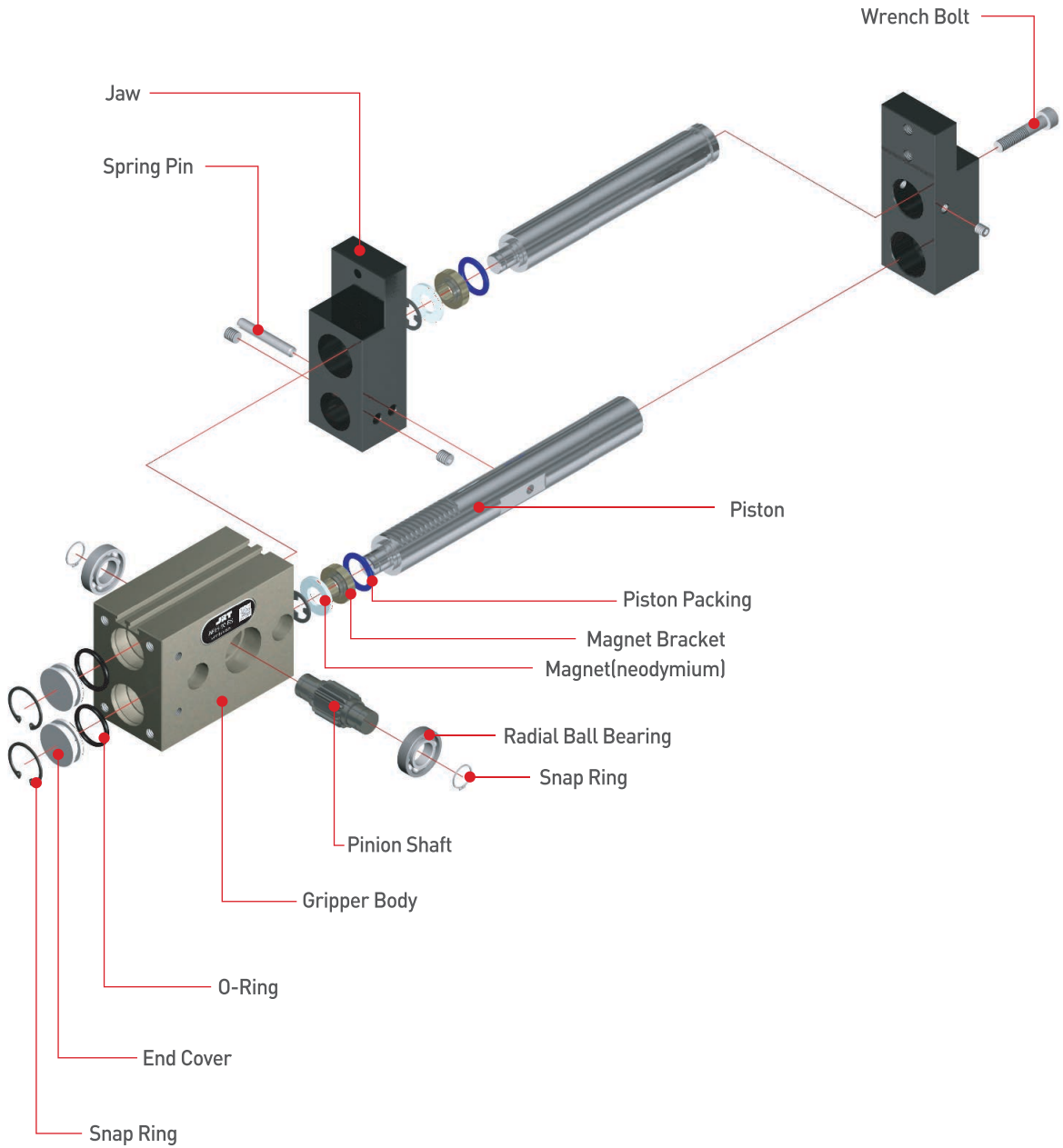
조 (Jaws)

파지부
for gripping

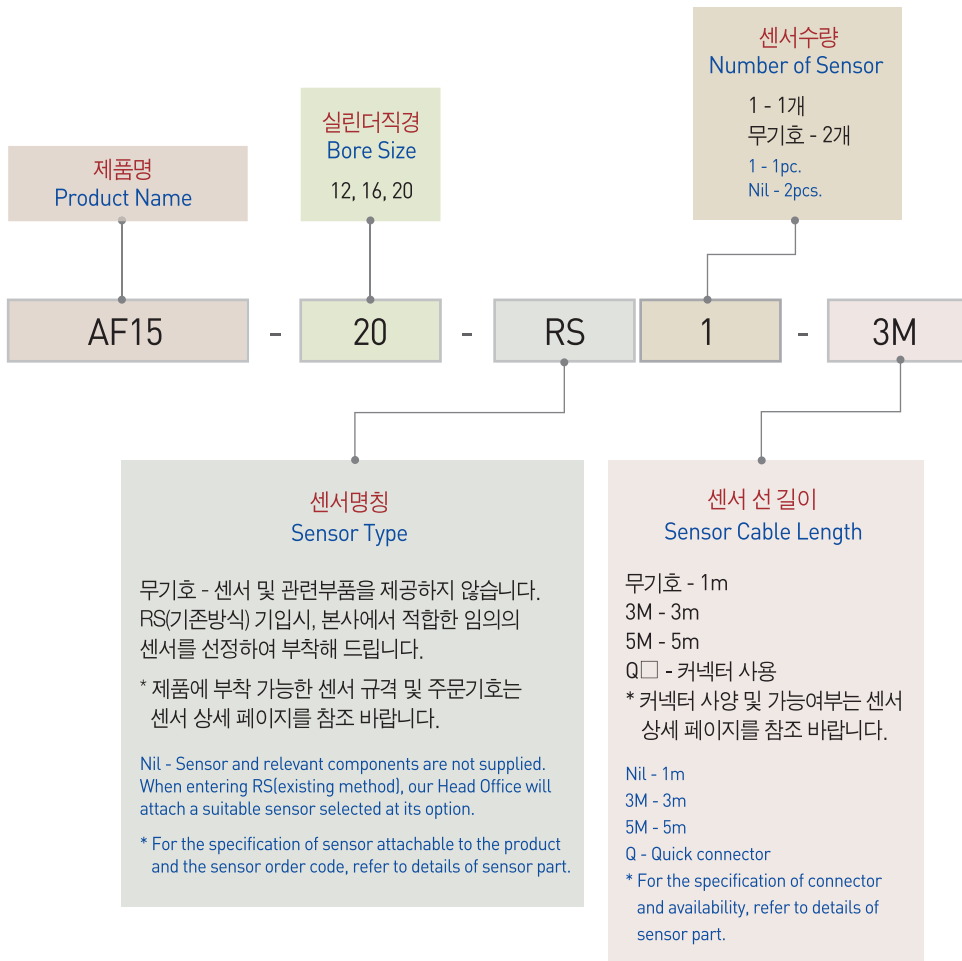
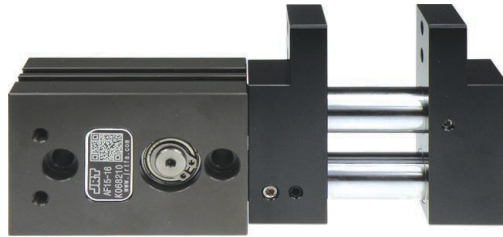
몸체 (Body)

경질 처리된 경량의
알루미늄 합금
high-tensile aluminum body
lightest with possible because
of hard anodizing

부품분해도 ※ 본 분해도는 한 제품을 예시하였으므로 기종별로 차이가 있을 수 있습니다



주문기호 (How to Order)



AF101

AF02

AF04P

AF105P

AF10

AF13

AF14

AF15

AF316

AF316L

AF416

AF17

AF117

AF24

AF26

AF28D

AF28DS

AF30 (SN)

AF30L

AF46 (SN)

AF56L

RAF56N

MF16

☐ 제품사양 (Specification)

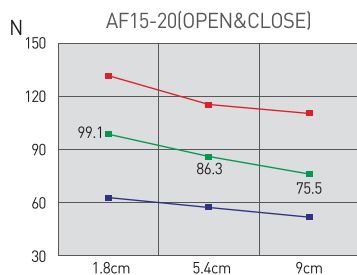
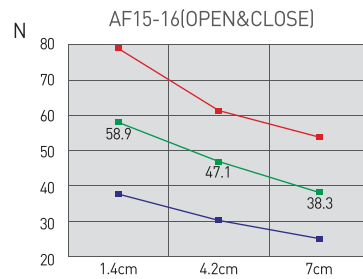
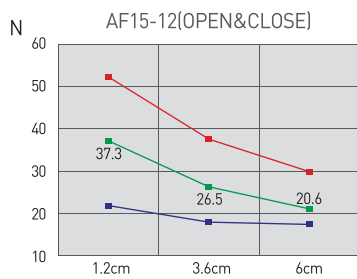
P=공기압력(bar), L=작용점까지의 거리(mm)
 P = Air Pressure(bar), L = Gripping point distance(mm)

제품명칭 Products Name	AF15-12	AF15-16	AF15-20	단위 Unit
개폐범위 Stroke	20	30	36	mm
제품중량 Weight	0.43	0.81	1.6	kg
최대치구길이 Max. length attach	60	70	90	mm
배관접속구 Fitting size	M5	M5	M5	
파지력 : 열림시 Gripping force : Open	46.11P/(5+0.1L)	107.91(P+0.7)/(9+0.1L)	392.4(P+1)/(22+0.1L)	N
파지력 : 닫힘시 Gripping force : Close	46.11P/(5+0.1L)	107.91(P+0.7)/(9+0.1L)	392.4(P+1)/(22+0.1L)	N
1사이클당 공기소모량 Air consumption per cycle	1.1	3.0	5.7	cm ³
닫힘시/열림시 시간 Closing / Opening time	0.01/0.01	0.01/0.01	0.01/0.01	sec
반복정밀도 Repeat accuracy	0.05	0.05	0.05	mm
연속사용회수 Continuation usage amount	60	40	40	cpm
사용압력 Operating pressure		3~7		bar
주위온도 Ambient temperature		-5 to 60		℃
윤활 Lubrication		불필요 Needless		

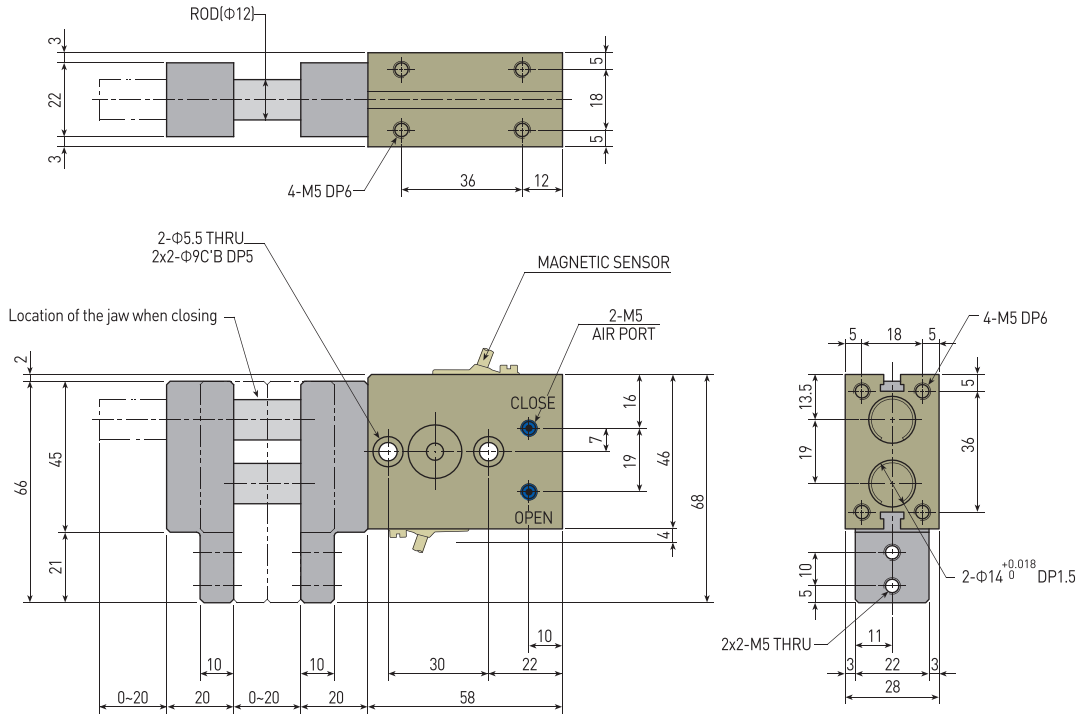
반복정밀도 : 연속 100회 작동후 측정치
 After 100 consecutive strokes to end positions

☐ 작용점에서의 파지력 (Gripping Force From a Point of Action)

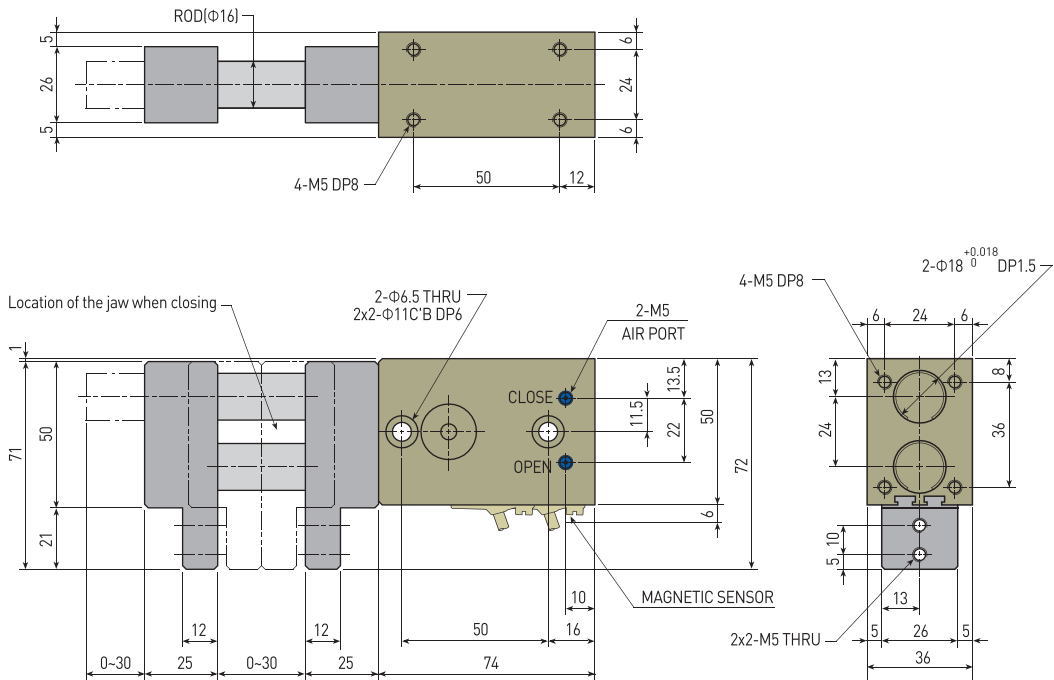
범례(Legend) : —■ 7[bar] —■ 5[bar] —■ 3[bar]



AF15-12



AF15-16



AF101

AF02

AF04P

AF105P

AF10

AF13

AF14

AF15

AF316

AF316L

AF416

AF17

AF117

AF24

AF26

AF28D

AF28DS

AF30 (SN)

AF30L

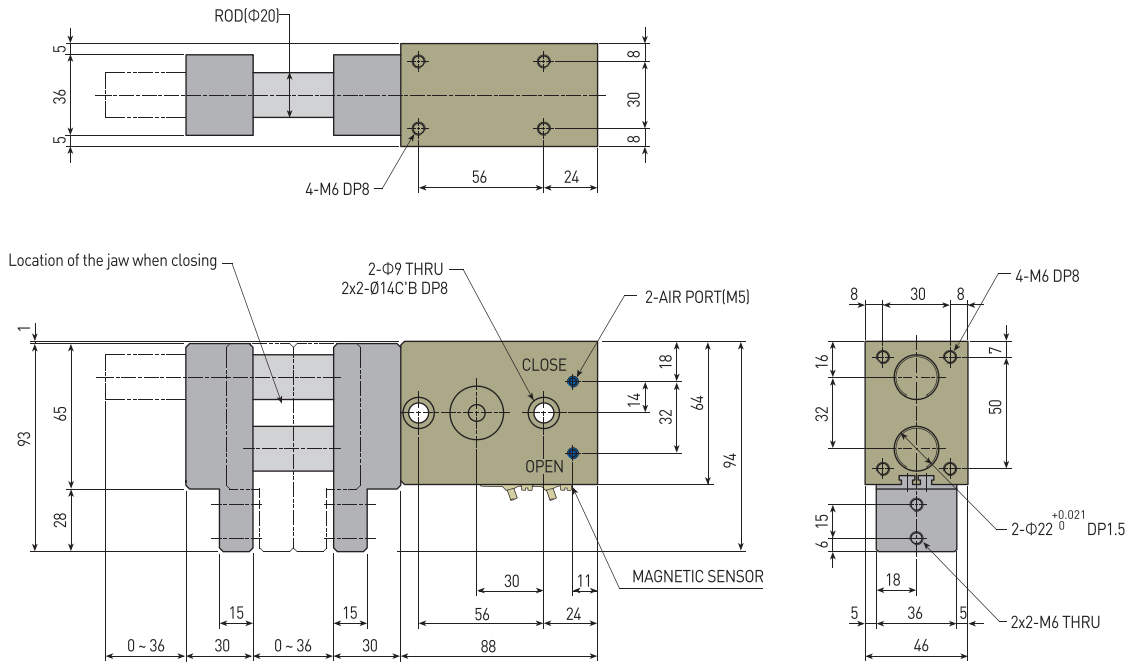
AF46 (SN)

AF56L

RAF56N

MF16

AF15-20



NOTE